



NSi AUTOSTORE transforms paper - and manual-based data capture processes into easy and efficient electronic workflows. Companies and organizations that use AUTOSTORE streamline their business processes, improve productivity, reduce operating costs and enforce compliance with laws and regulations. AUTOSTORE enables users to classify documents, extract just the information that's needed, and send it wherever necessary, all with a few easy clicks.

AUTOSTORE provides a smart business automation solution for a range of information-intensive industries, including:

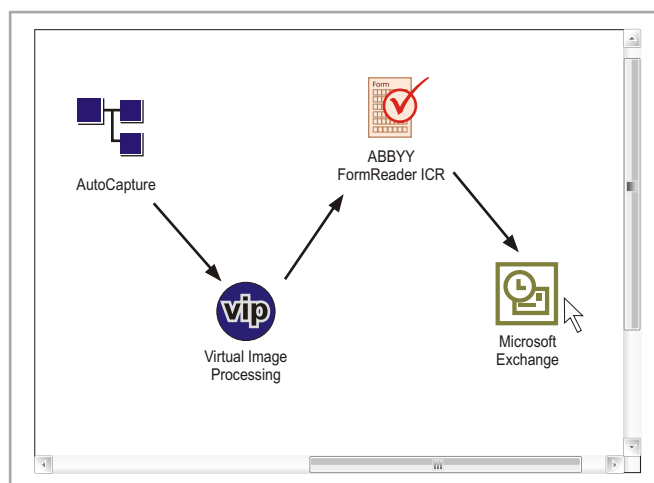
- Healthcare
- Financial services
- Retail
- Legal
- Utilities
- Manufacturing
- Transportation and logistics
- Professional services
- Local and state government
- Non-profit

Virtual Image Processing for AUTOSTORE

Image optimizing component for the powerful document capture system by Notable Solutions, Inc. (NSi) marked the starting point in partnership between ATAPY and NSi

NSi's AUTOSTORE application is a leading product for document capture, processing and distribution. Adopted by many top manufacturers of on-ramp devices, such as MFPs and digital copiers, AUTOSTORE's framework is becoming the standard of server-based document capture for devices by HP, RICOH, Kyocera, Xerox, Canon and many other internationally-renowned companies.

ATAPY has enhanced AUTOSTORE with a new image treatment tool named Virtual Image Processing (VIP). In terms of AUTOSTORE, VIP is an integrated process component placed between the "capture" and "route" sources in a capture workflow. Such workflows are created visually in the AUTOSTORE Process Designer (an Administrative tool)



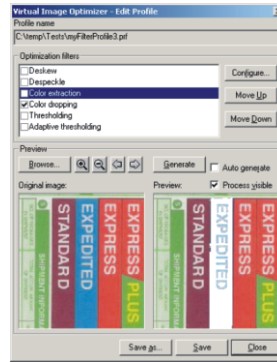
The capture workflow creation process

using a drag-and-drop technique. VIP provides for optimizing document image quality for subsequent recognition via several configurable filters and their combinations. The number of filters is growing with every new version of the AUTOSTORE application.

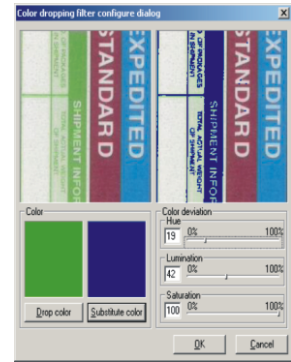
All original image modifications are reflected "on the fly" in the preview window of the component configuration interface. Once the desired image quality is achieved, the filter combination profile can be saved and used in other AutoStore workflows containing VIP. This eliminates the need to configure filters every time a new capture-process-route sequence is designed. This is extremely valuable for companies with large workflows of template-based documents.

VIP implements a large number of different image filters, out of which the most basic are:

- Color Extraction filter - keeps the selected color, while all other colors are dropped. Users can also select a color to replace the dropped ones in the resulting image
- Des skew filter - corrects the skewed angle of the image
- Despeckle filter - eliminates small speckles on the image
- Color Dropping filter - drops the selected color and replaces it with the substitute color
- Thresholding filter - converts an image to black-and-white. All pixels with the brightness level less than the specified level become white, while others become black
- Adaptive Thresholding filter - allows improving recognition results for source images with irregular background using a sophisticated binarization algorithm



VIP filter profile configuration dialog



Color dropping configuration dialog



Notable Solutions, Inc. (www.nsius.com) was founded in 1995 to provide complete technology solutions in the fields of Software Development, System Engineering, Technology Training and Business Consulting. Since that time NSi has evolved towards software and hardware design, development, network integration, and support of document management systems. NSi prides itself on a commitment to quality and a reputation for excellence. It is now a leading provider of content capture software with products in use by Canon, HP, Kodak, Kyocera, RICOH, Sharp, Xerox and others.

©2010 ATAPY Software. All rights reserved.
AutoStore is a registered trademark of Notable Solutions, Inc.
All the other trademarks are the property of their respective owners.



ATAPY Software

630090, Enginernaya Street, 4a, 522
Novosibirsk, Russia
Tel. +7 383 33 56 569 Fax +7 383 33 56 561
www.atapy.com office@atapy.com

Notable Solutions, Inc. (NSi)

9715 Key West Ave., Suite 200
Rockville, MD 20852, USA
Tel.: +1 240 683-8400 Fax: +1 240 683 8420
www.nsius.com sales@nsius.com